

**JAPANESE FOLK SONG**



Sa - ku - ra, Sa - ku - ra, Ya - yo - i - no - so - ra - wa. Mi - wa - ta - su - ka - gi - ri -

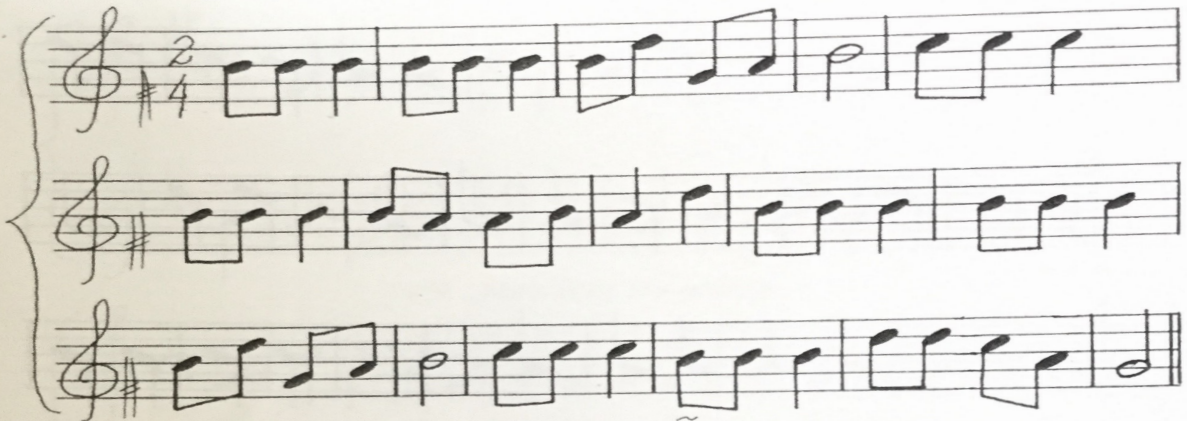


ka - su - mi - ka - ku - mo - ka. Ni - o - i - zo, i - zu - ru.

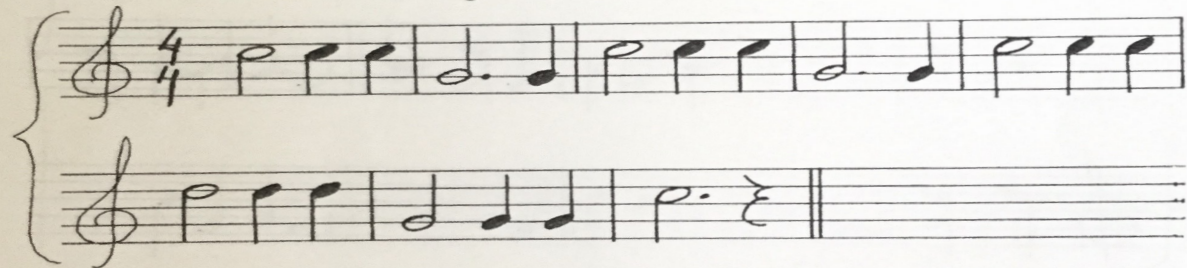


I - za - ya. I - za - ya. Mi - ni - yu - kan.

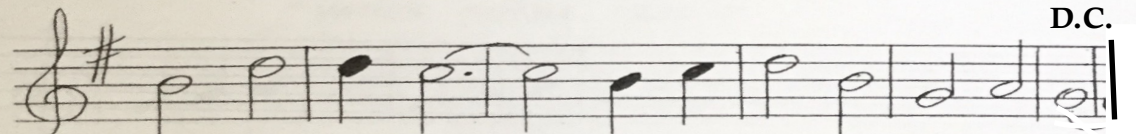
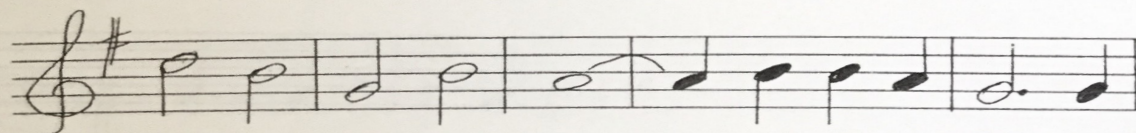
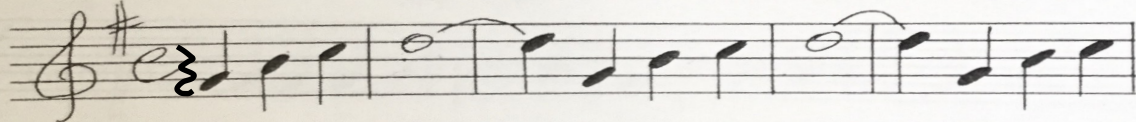
*"JINGLE BELLS"*



*BAMBALALÃO*



*OH, WHEN THE SAINTS*



**D.C.**

# An die Freude

Música: Ludwig van Beethoven - 1823

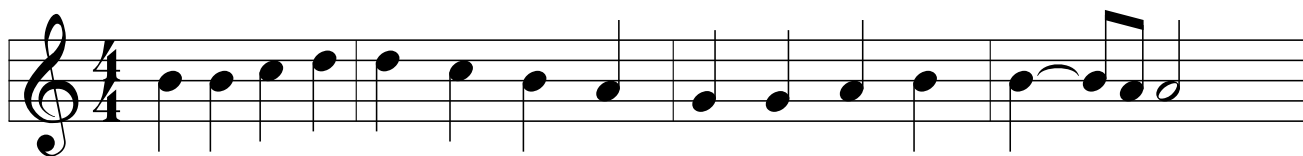
Texto: Friedrich Schiller - 1785

Alegria, faíscas lindas dos deuses, Filha de Elysium /

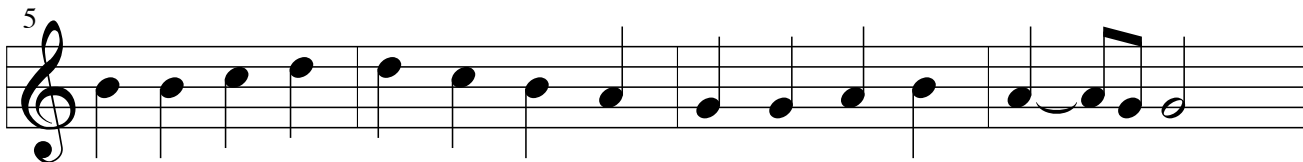
Entramos ébrios de fogo no teu santuário celestial/

Tua magia volta a unir o que o costume dividiu/

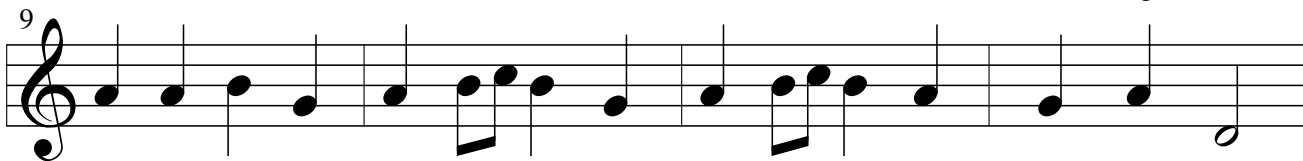
Todos os homens tornam-se irmãos, onde teu doce voo se detém.



Freu-de, schö-ner Göt - ter - fun - ken, Toch - ter aus E - ly - si - um

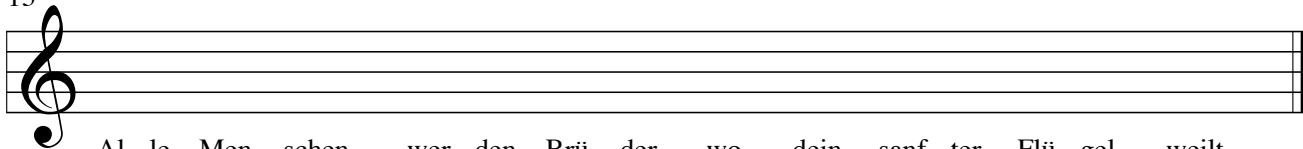


wir be- tre- ten feu- er- trun- ken, Himm- li- sche, dein. Hei - lig - tum! -



Dei - ne Zau - ber bin - den wie - der, was die Mo - de streng ge - teilt.

13



Al - le Men - schen wer - den Brü - der, wo dein sanf - ter Flü - gel weilt.

# Descobridor dos Sete Mares

Tim Maia

Flauta doce Soprano

4

D m G D m G

U - ma luz a - zul me gui-a com a fir-me-za e os lampejos do fa - rol  
E os re - ci-fes lá de ci-ma me a - vi-sam dos pe-ri-gos de che-gar

5

D m G D m G

An-gra dos Reis e I - pa - ne-ma I - ra - ce-ma I - ta - ma-ra-cá  
Por-to Se - gu - ro São Vi - cen-te (Bra)ços a - bertos sempre a es-perar

9

G A m

Pois bem, che - - - guei

11

D G m C A m

Que-ro fi - car bem à von - ta - de na ver - da-de eu sou as - sim.

15

D G m C D.C.

Des - co - bri - dor dos se - te ma - res, na - ve - gar eu que - ro

1. O que significa a barra dupla com 2 pontinhos ao final do compasso 4? \_\_\_\_\_

E os sinais "Casa 1" e "Casa 2" nos compassos 8 e 9? \_\_\_\_\_

2. O que é D.C.? \_\_\_\_\_

3. O que significa "b" antes da nota SI? \_\_\_\_\_